



# The 5<sup>th</sup> International Workshop on UI GreenMetric World University Rankings (IWGM 2019)

*Sustainable University in a Changing World: Lessons, Challenges and Opportunities*

University College Cork, Ireland  
14-16 April 2019



## Sustainability Culture at USP - São Carlos Campus

**Tadeu F. Malheiros**, Rodrigo M. Moreira, Nayara Jorge, Patrícia F. I. Lemos,  
Fernanda R. B. Fernandez, Tamara M. G. Aprilanti, Paulo S. Almeida



# USP



**UCC**  
University College Cork, Ireland  
Coláiste na hOllscoile Corcaigh

The **5<sup>th</sup>** International Workshop on  
UI GreenMetric World University Rankings (IWGM 2019)

*Sustainable University in a Changing World: Lessons, Challenges and Opportunities*

University College Cork, Ireland  
14-16 April 2019



University of São Paulo  
(USP) launched its  
Environmental Policy  
in January 2018





# Sustainability culture

"the culture in which individuals are aware of major environmental (and social / economic) challenges, behave in sustainable ways, and are committed to a sustainable lifestyle for both present and future"



**UCC**  
University College Cork, Ireland  
Coláiste na hOllscoile Corcaigh

The **5<sup>th</sup>** International Workshop on  
**UI GreenMetric World University Rankings (IWGM 2019)**

*Sustainable University in a Changing World: Lessons, Challenges and Opportunities*

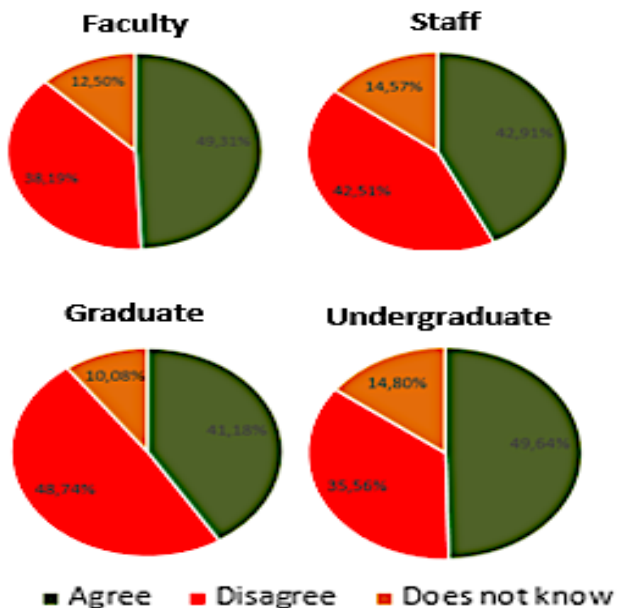
University College Cork, Ireland  
14-16 April 2019



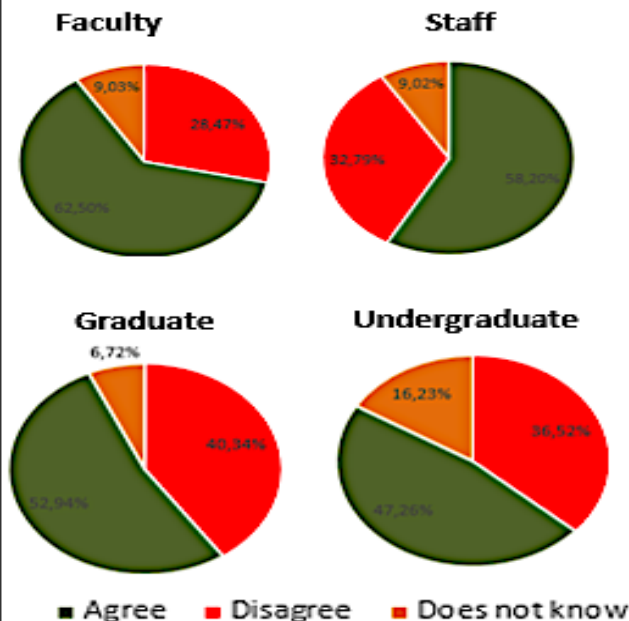
Category	Respondents 2016	Respondents 2018	Total Population USP - SC
Undergraduate Students	571	703	4752
Postgraduate Students	167	496	3142
Faculty	199	126	586
Staff	350	645	799
<b>Total</b>	<b>1287</b>	<b>1970</b>	<b>9279</b>

Number of people that answered the Sustainability Questionnaire at USP-São Carlos

"In general, people should use public transport, such as buses, even if it is less convenient." Do you:

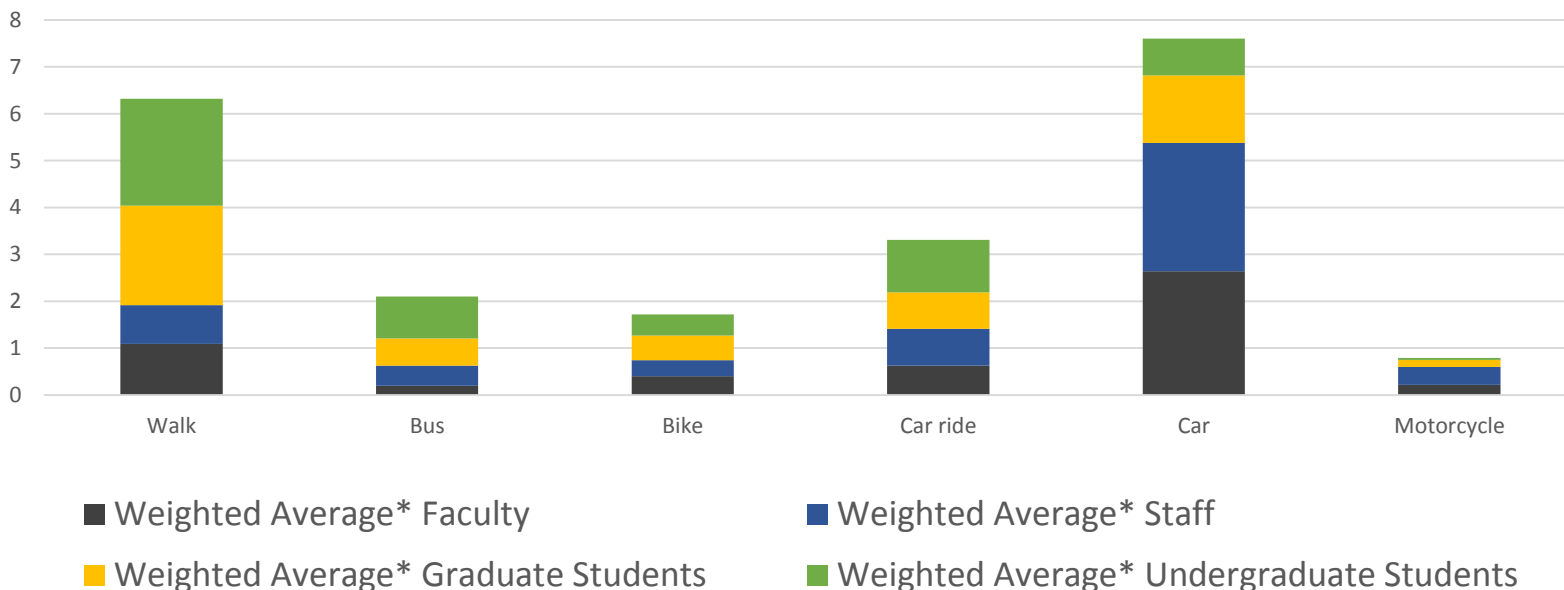


"Overall, people should ride their bikes or walk even if it's less convenient." Do you:

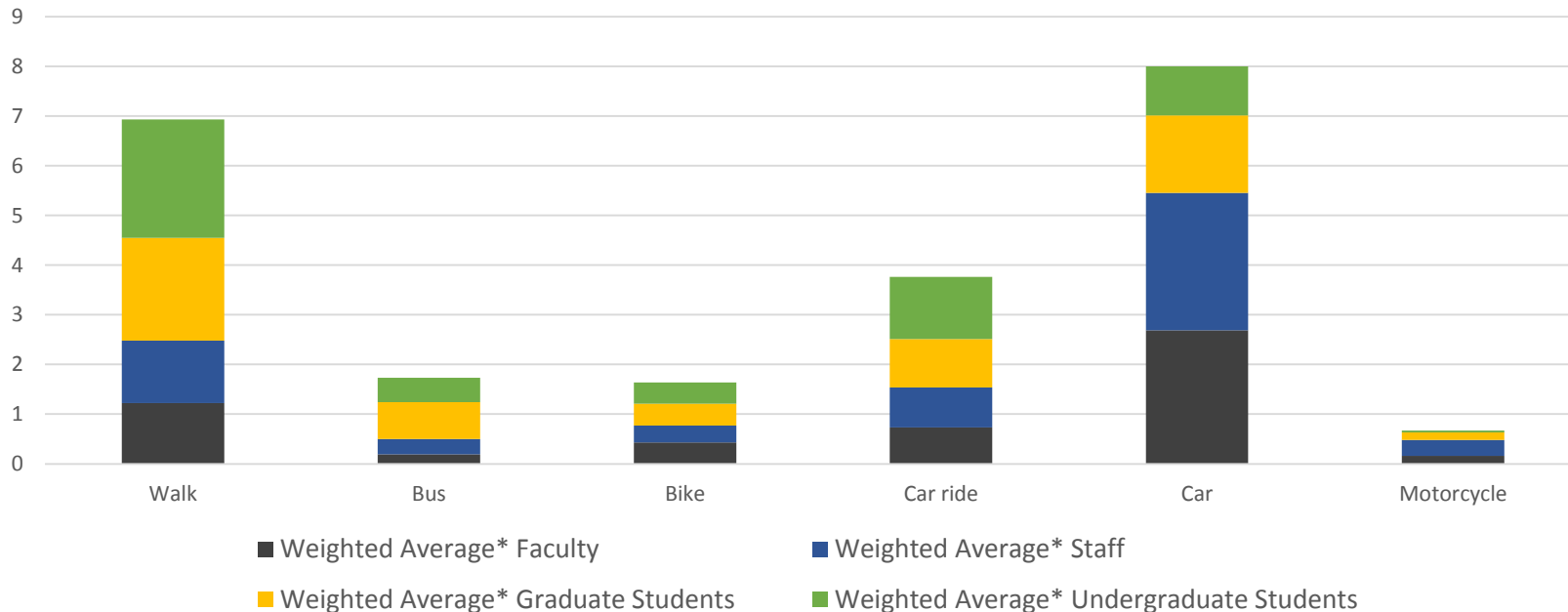


Responses from Faculty, students and Staff to the Sustainability Questionnaire

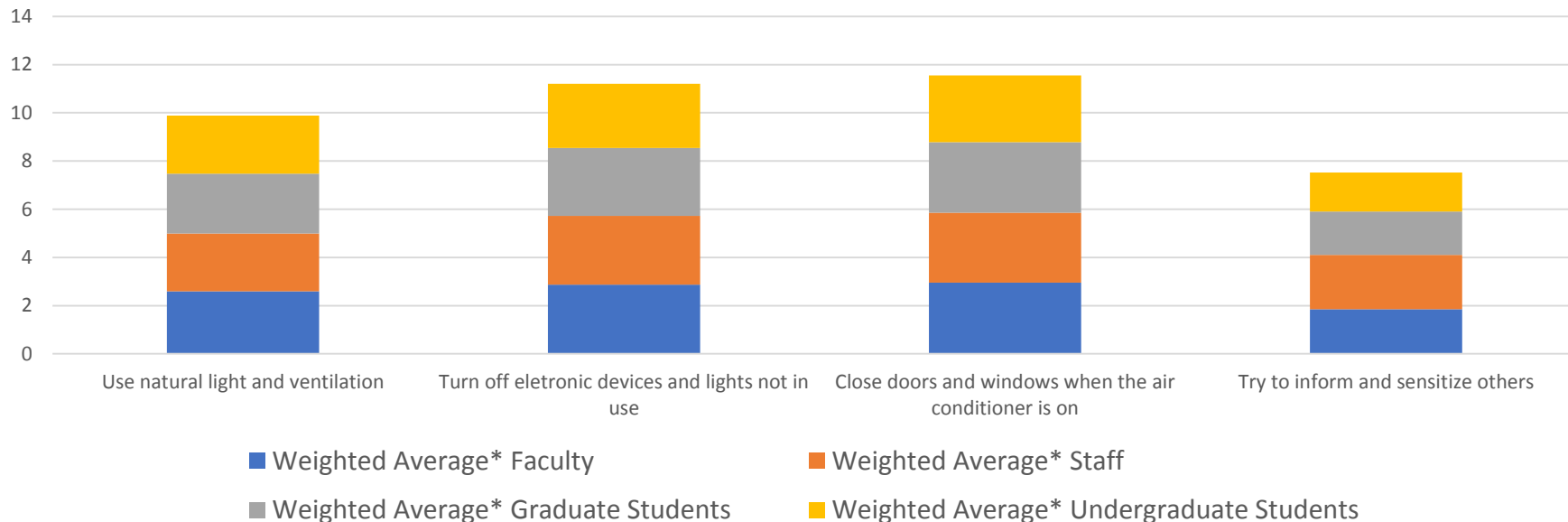
During the last 12 months, how often did you use the following means of transportation to attend University?



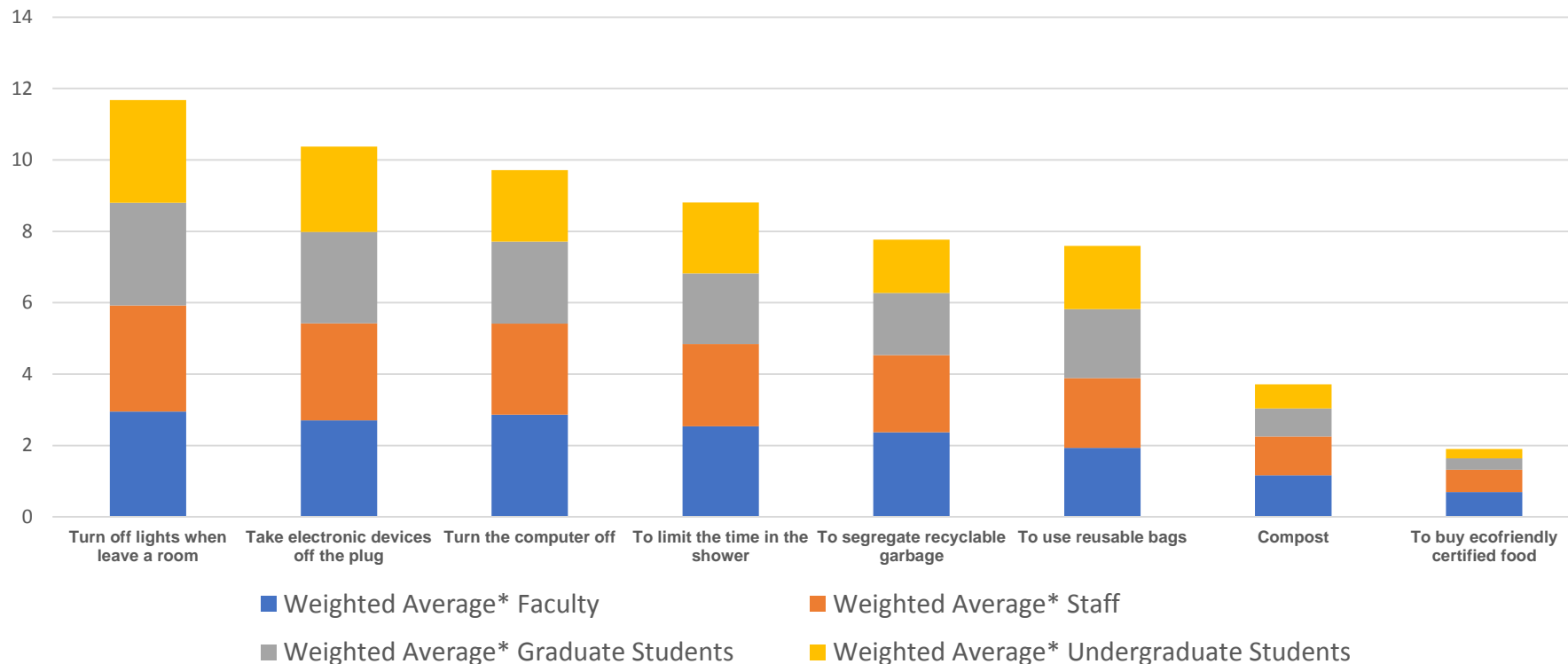
During the past 12 months, how often have you used the following means of transportation between your residence and places like supermarkets, malls, etc?



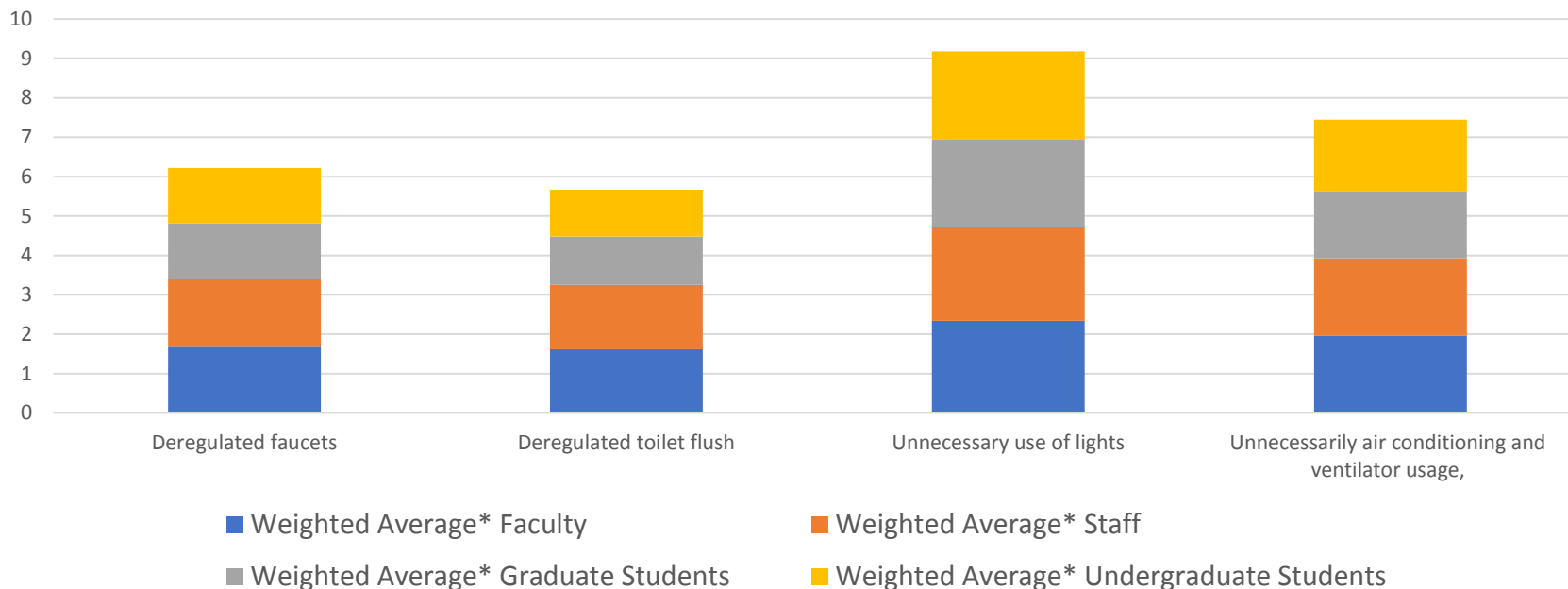
## How often do you do the following things to save electricity on your college activities?



During the past 12 months, how often have you done the following things in your current home?



At the USP facility in São Carlos, how often do you observe the following forms of waste





## Learnings .....

- Discourse & behavior
- Differences among stakeholders
- Need for different approaches
  
- Indicators .....